

Below procedure to update an AudioControl RS500 to latest speaker profile and the firmware specific to the “Wisdom Audio” version of the RS500.

Tools needed:

- PC with Windows or MacOS
- Power cable for Device Under Test (DUT)
- Available wired network for PC and DUT
 - The network must be able to assign an IP address to the DUT. Any standard router will work. If the network server cannot assign an IP address, recommendation is to purchase any off the shelf router with at least 2 ports (less than \$50)
- 2 Network cables

Software needed:

- Any web browser, Chrome, Safari Firefox, etc...
 - Internet Access is not needed for this procedure, only if the PC needs to download the software. Once downloaded, only a network connection between the PC and DUT is needed
- IP Scan tool
 - For Windows OS - Advanced IP Scanner - <https://www.advanced-ip-scanner.com/>
 - For MacOS - LanScan - <https://apps.apple.com/us/app/lanscan/id472226235?mt=12>

Files Needed (Provided by Wisdom Audio)

- RS500_v2.0.31.bnc
 - AudioControl bnc Firmware – Version is custom for Wisdom Audio
- Wisdom Audio Sub Models_no_spaces_8_PEQs wcommas_ENC.csv
 - Speaker Profile CSV – Includes all Wisdom Subwoofers

Connection:

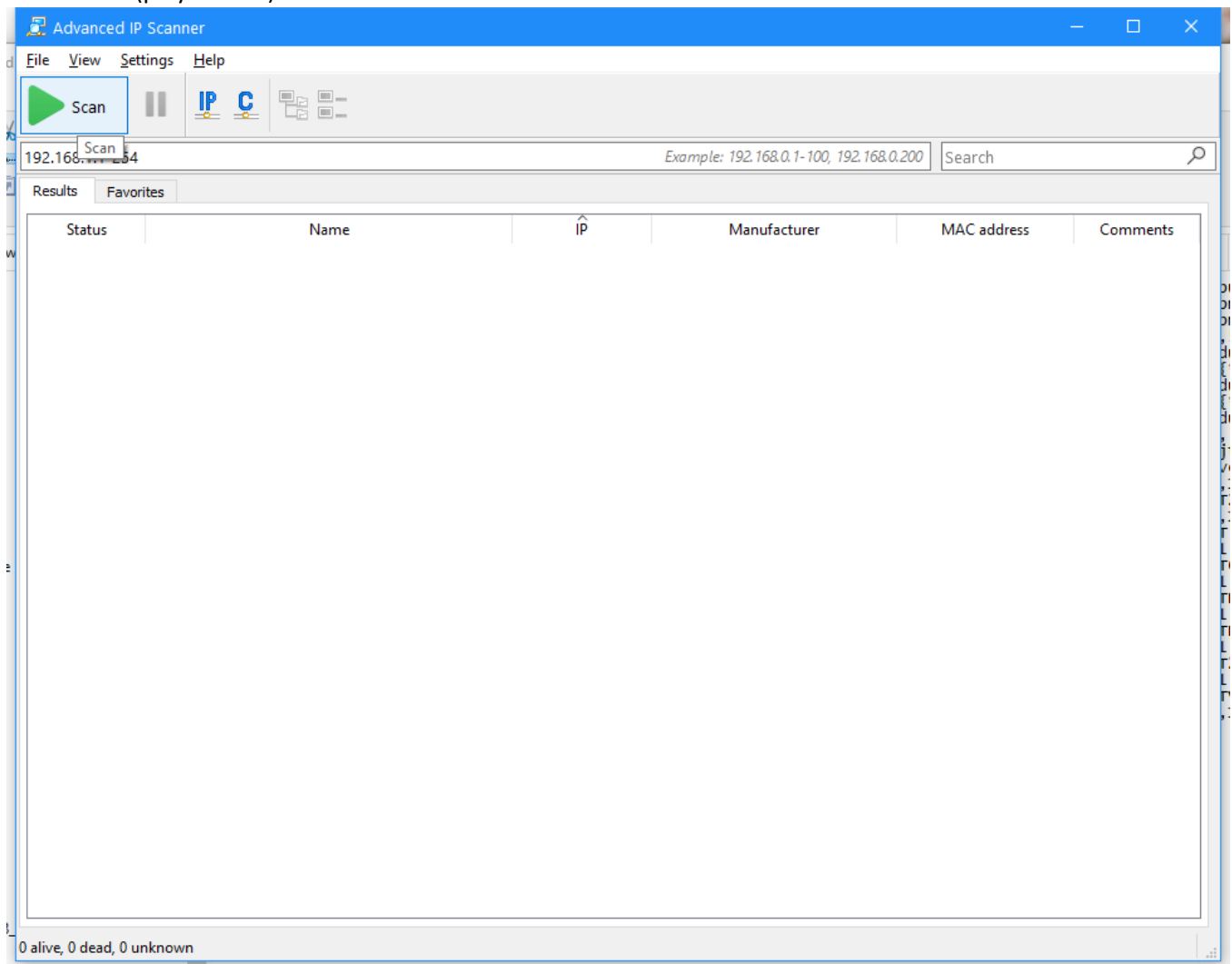
- Power to DUT
- Network cable to DUT
- Network cable to PC



Procedure:

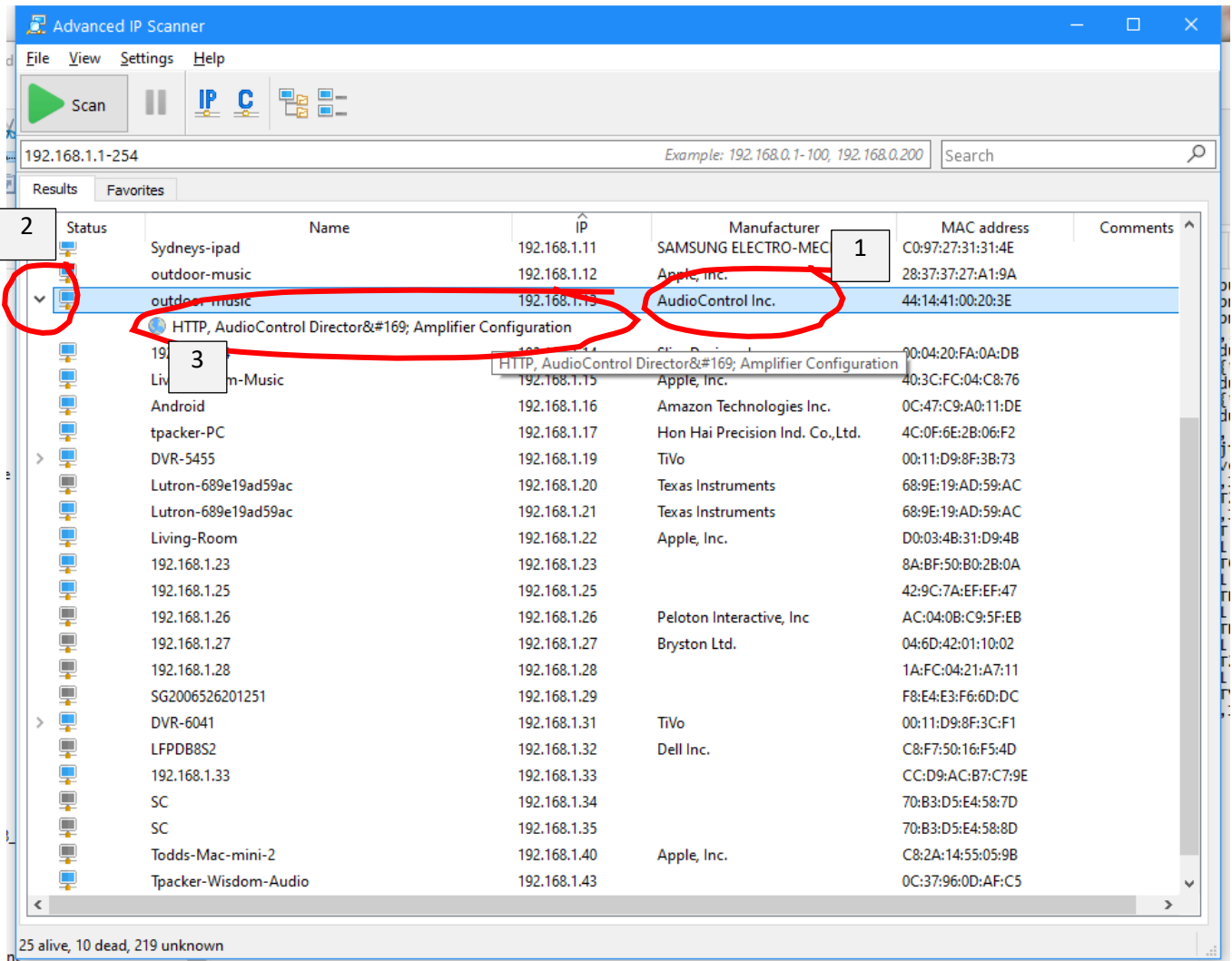
1. Download and install the IP Scanner if this is the first time using this tool.
2. Power on the RS500 Device Under Test
 - a. Master switch on back
 - b. Wait for blue LED on front
 - c. If blue LED does not come on within 30 seconds, press power button on front
3. Connect DUT and PC to Network

- a. Check that PC has network connection.
- b. Check rear panel of DUT for network connection activity lights
4. Open Advanced IP Scanner (PC)
5. Press SCAN (play button)



6.

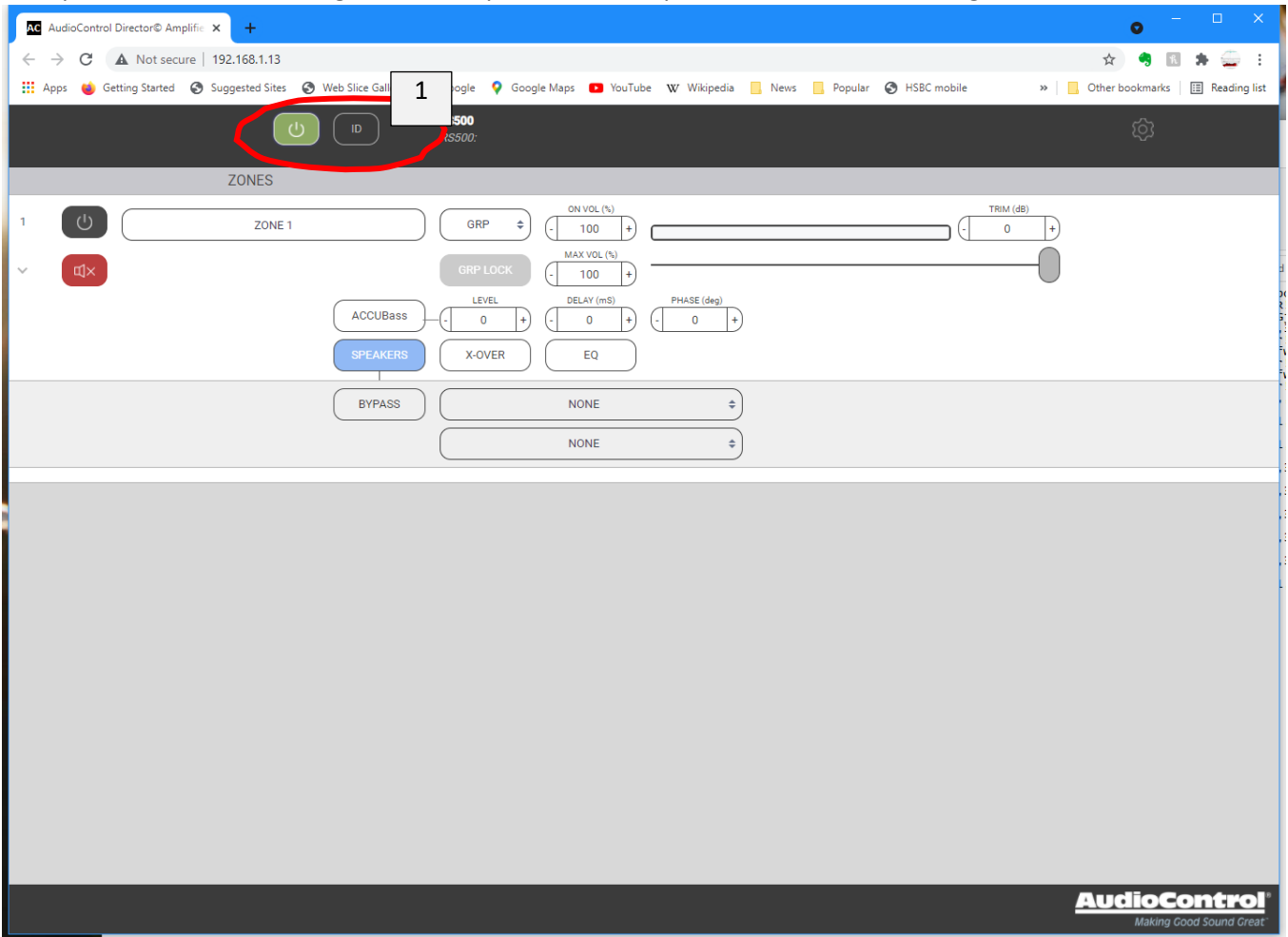
7. Find the AudioControl Inc in the manufacturer list
 - a. Click the arrow to expand the selection and show the HTTP configuration
 - b. Double click the HTTP, AudioControlDirector, Amplifier Configuration , this will open your default web browser.



8. 25 alive, 10 dead, 219 unknown

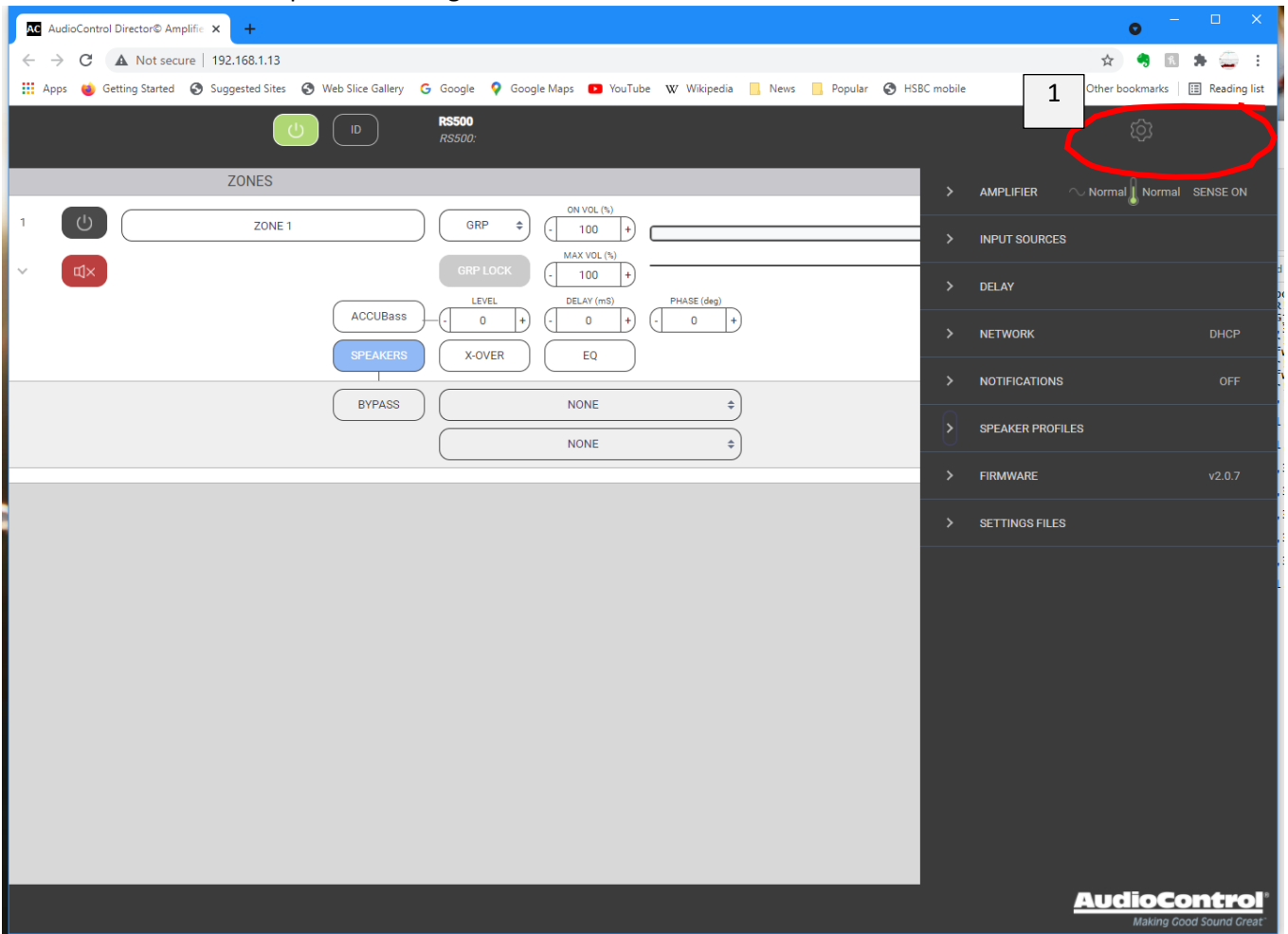
9. Web browser opens to main page

10. Web power button should be green. If not, press the web “power button” ensure it is green.



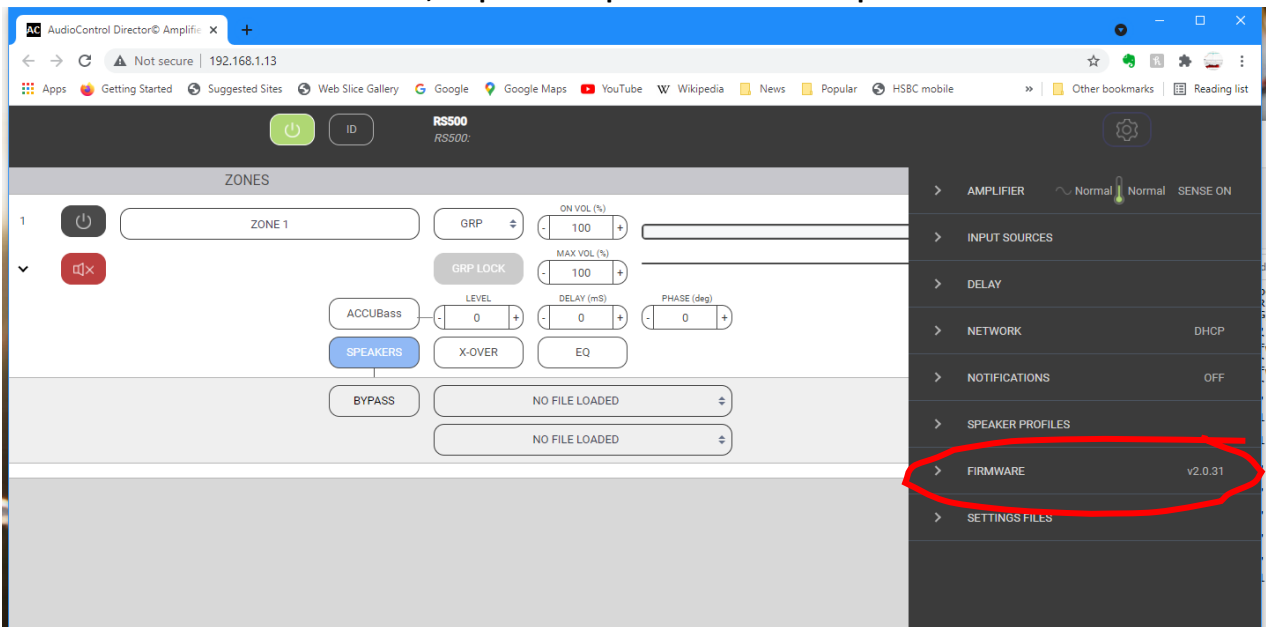
11.

12. Press the GEAR ICON to open the settings



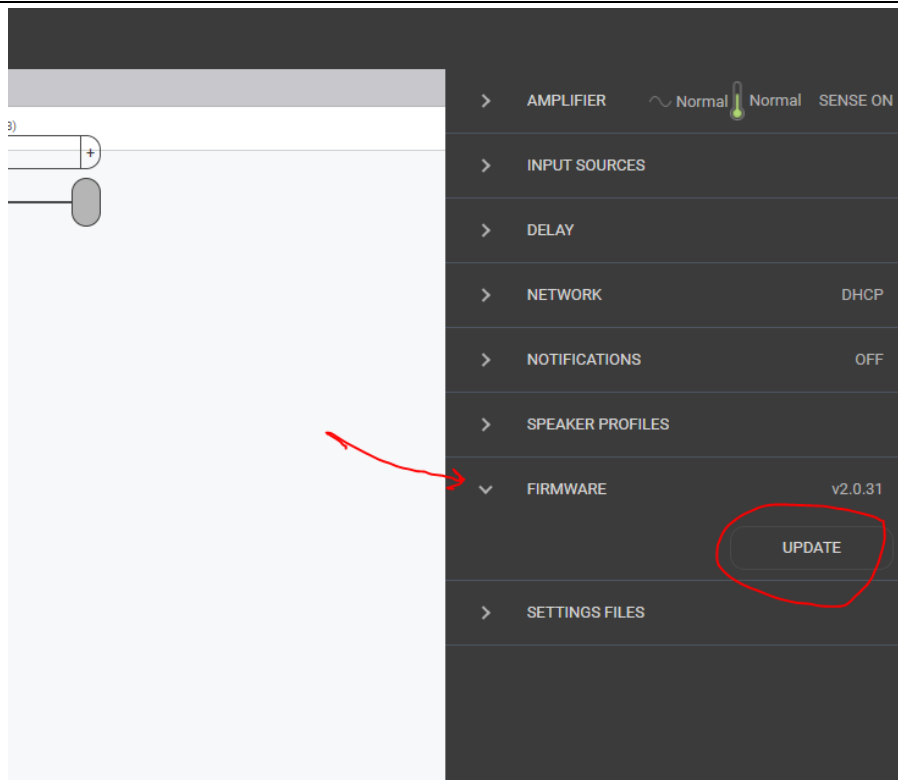
13.

14. Check the firmware is v2.031. If not, stop and complete the firmware update

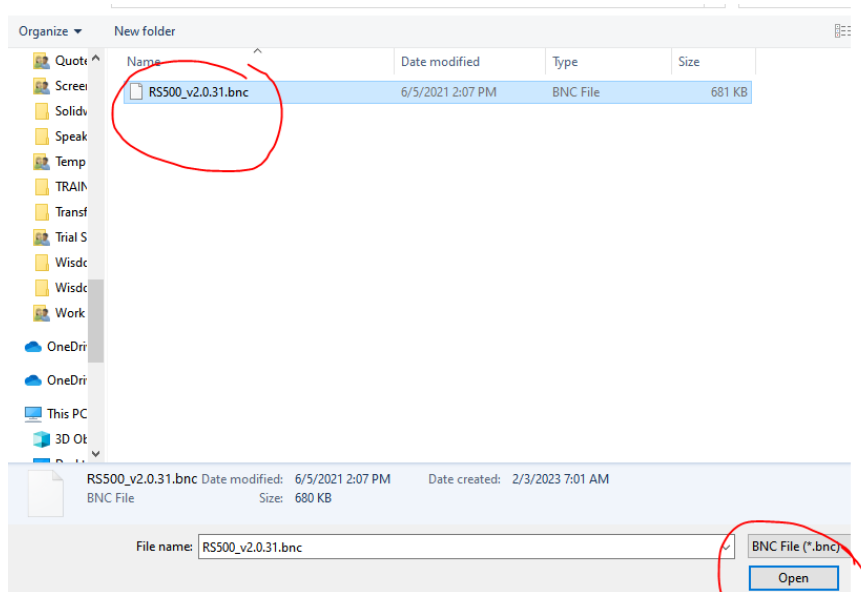


15.

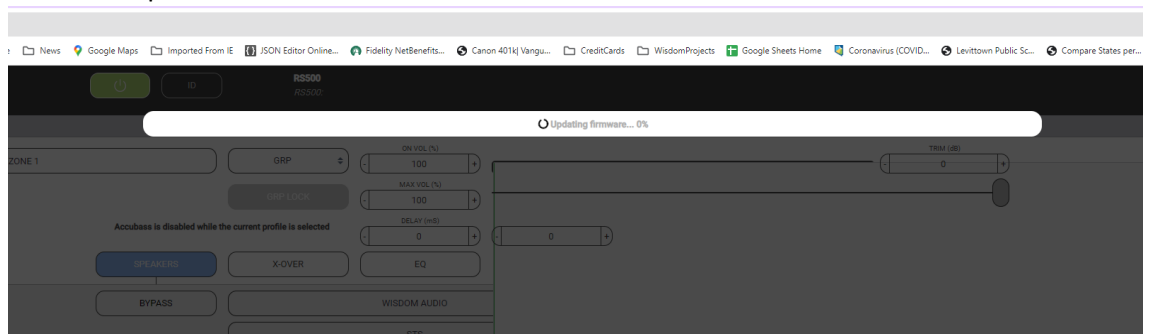
- Firmware Update (**only needed if the above was not v2.0.31, otherwise skip to the next step**)
- Click the arrow for FIRMWARE and press the button for UPDATE



- c.
- d. Select the “RS500_v2.0.31.bnc” file and click OPEN

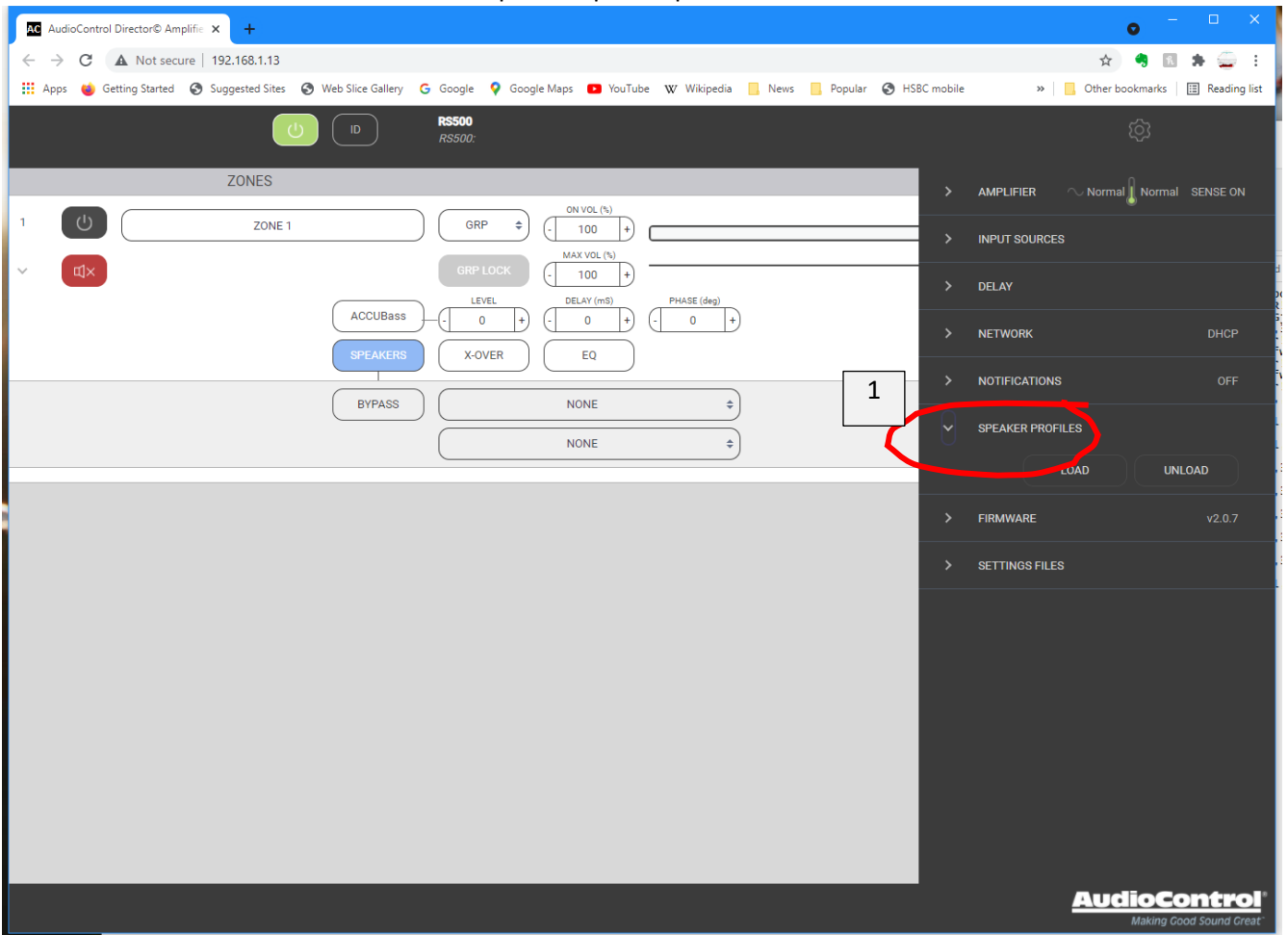


- e. Firmware Update Process bar



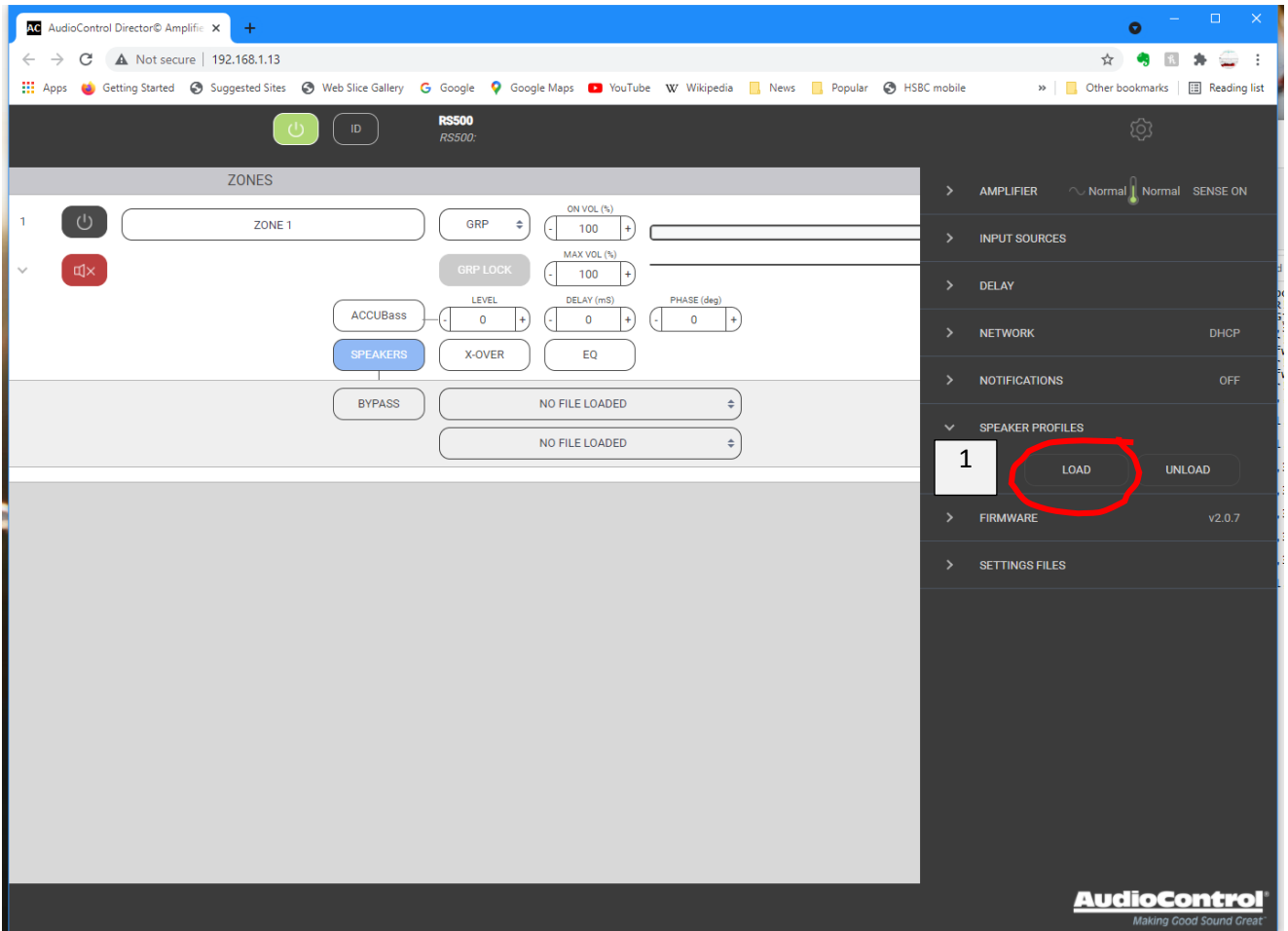
- f.
- g. Unit will reboot when done

16. Press the Arrow for SPEAKER PROFILES to open the profile pane

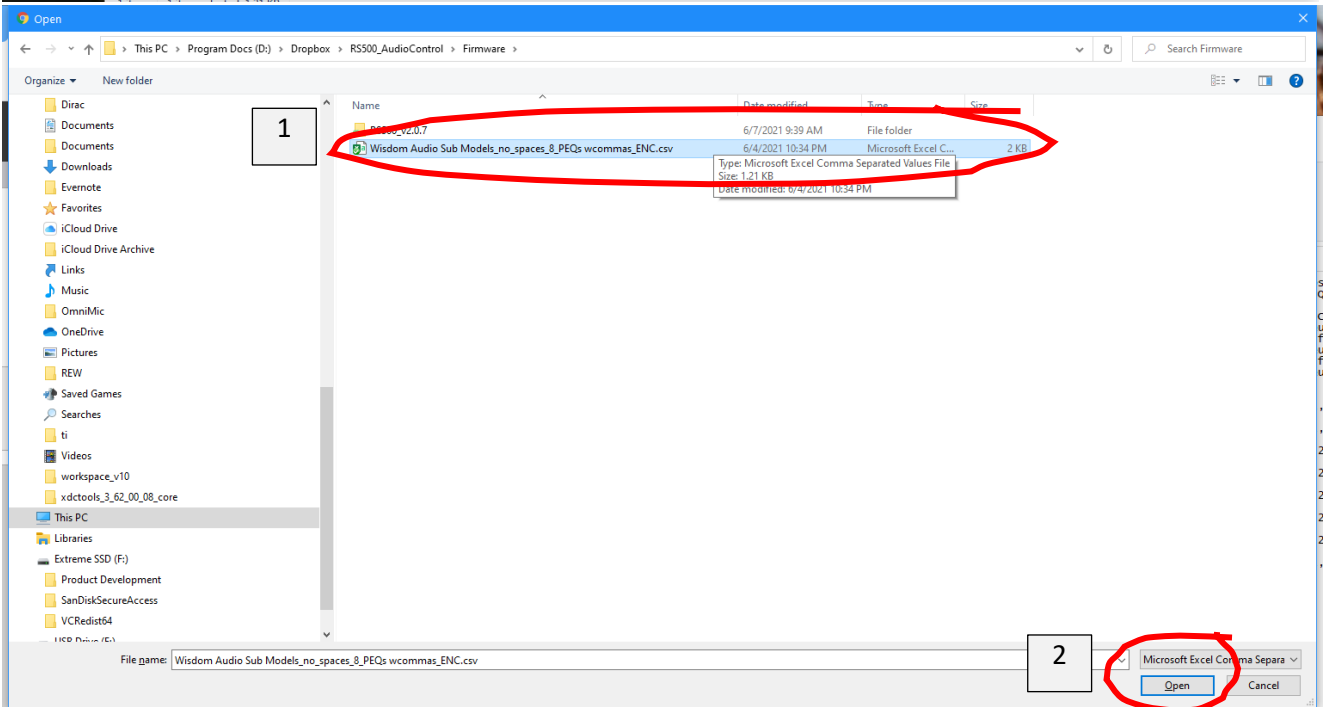


17.

18. Press the LOAD button and select the .csv profile that was downloaded before you started, or from the network drive.

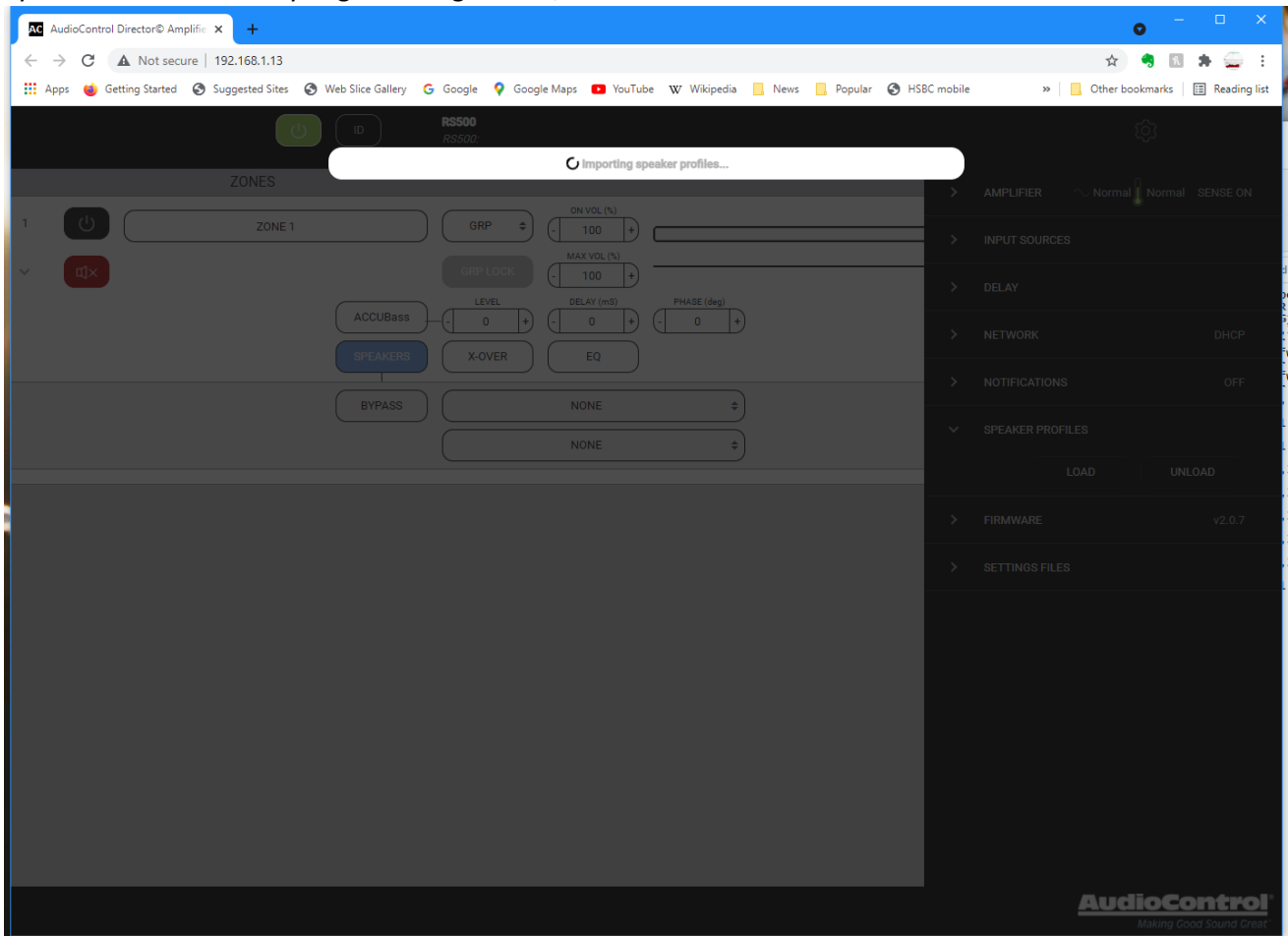


19.



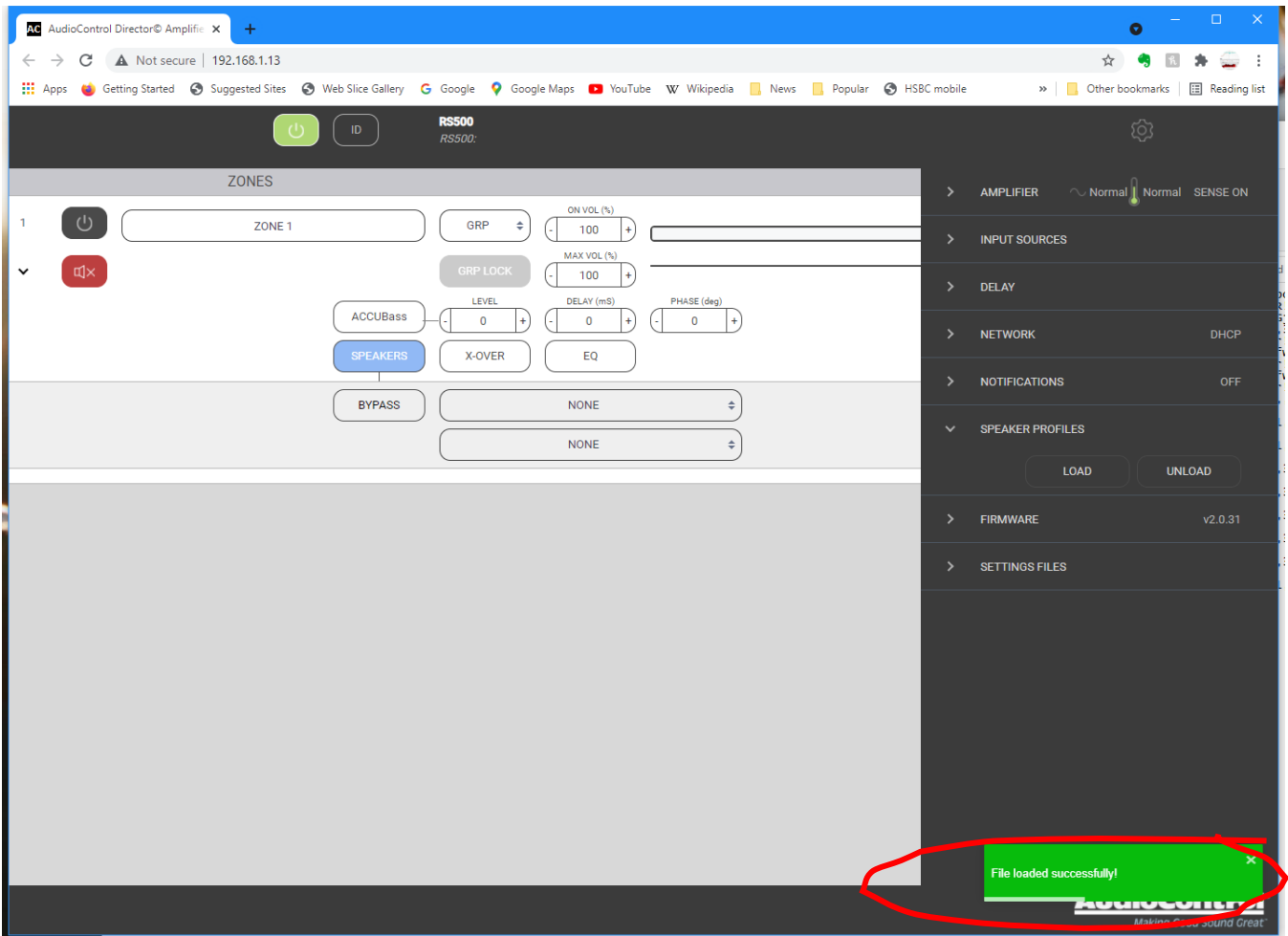
20.

21. System will automatically begin loading the file, if it is valid



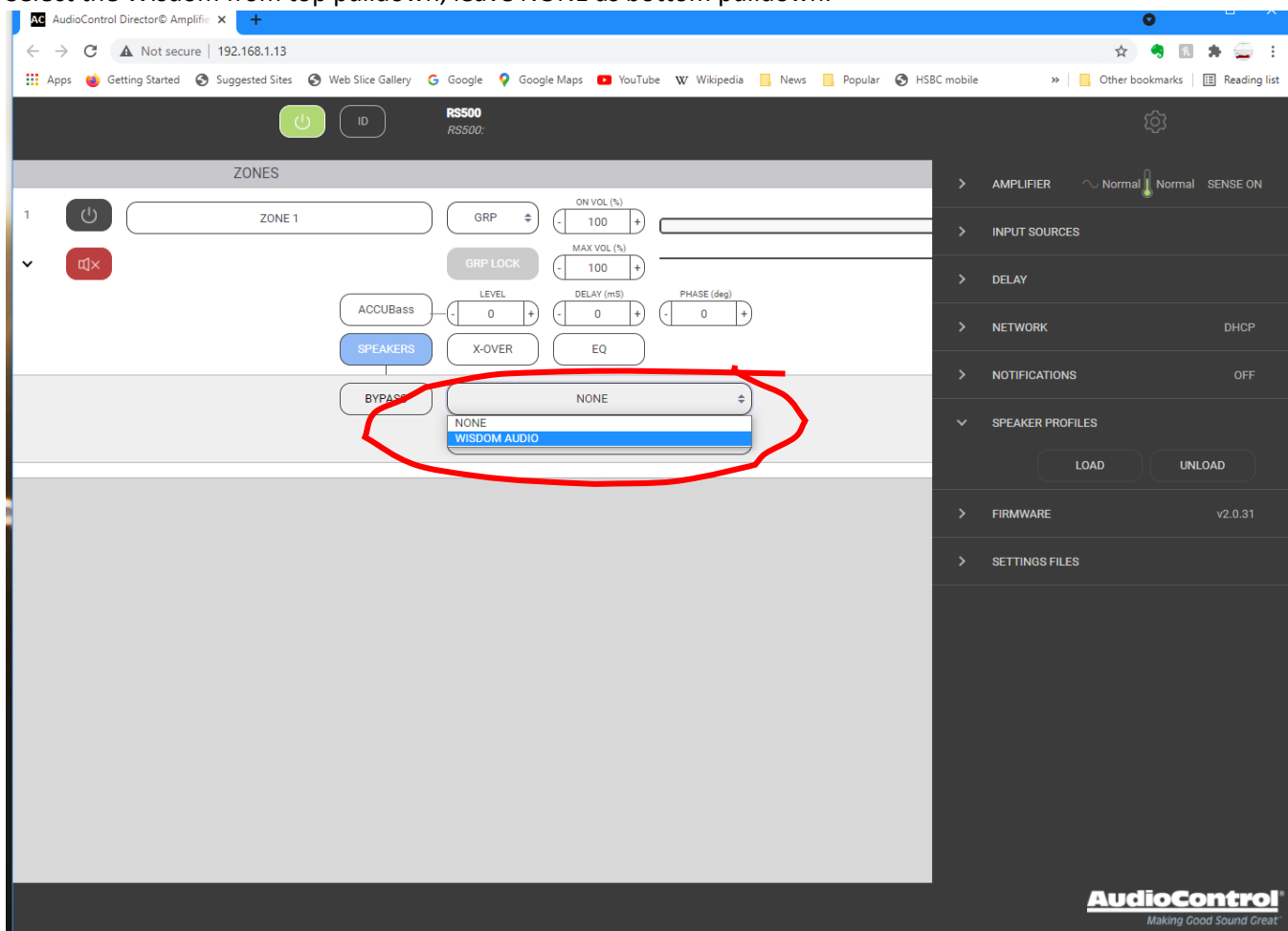
22.

23. Success!



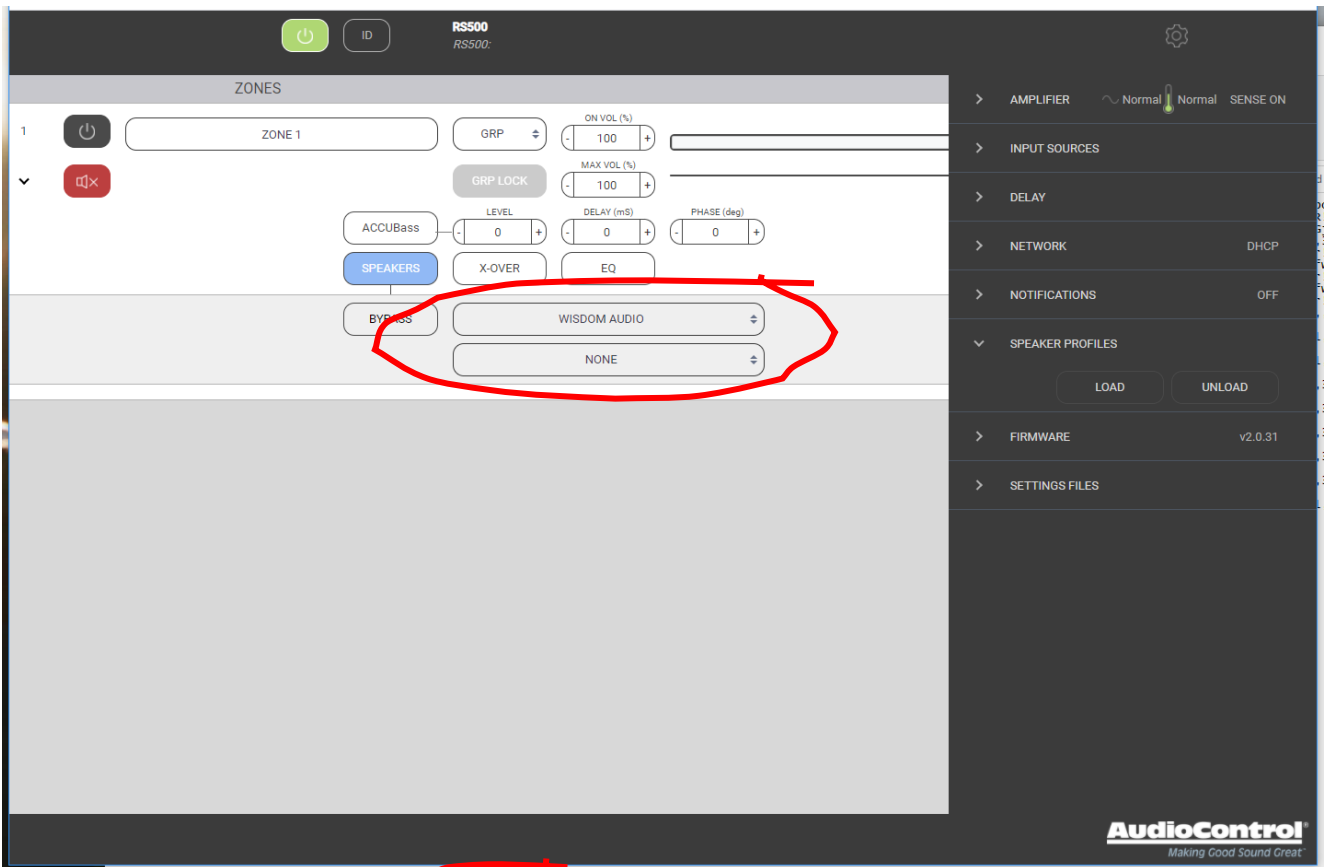
24.

25. Select the Wisdom from top pulldown, leave NONE as bottom pulldown.

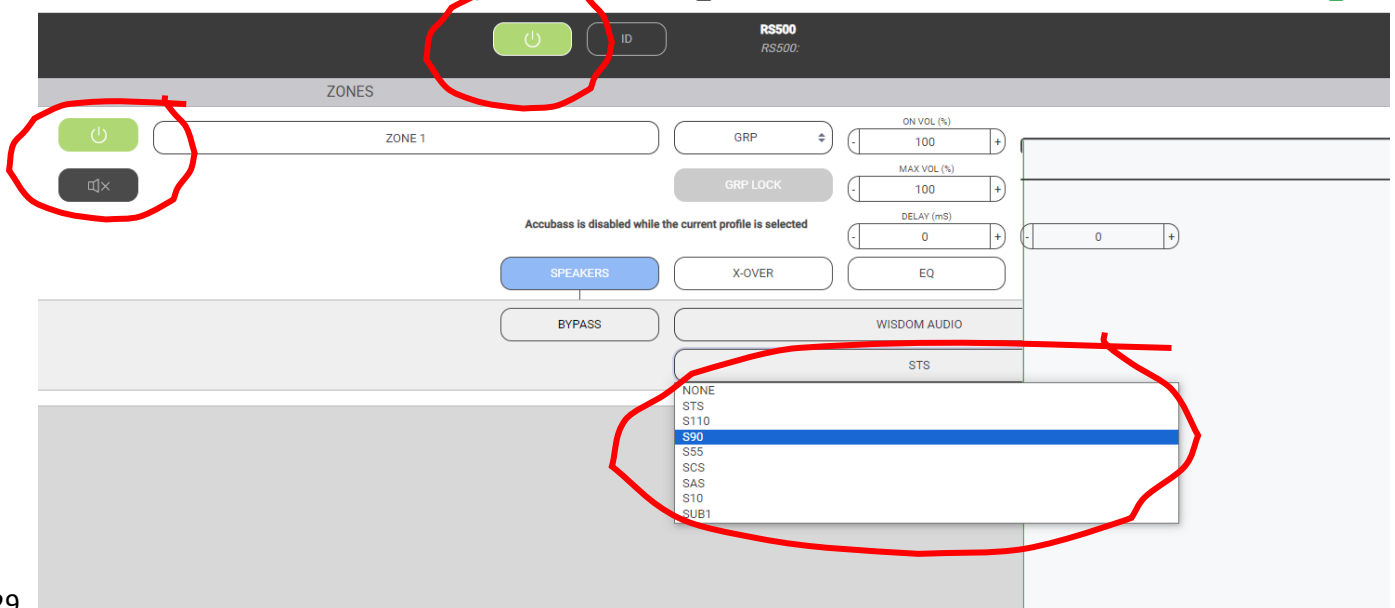


26.

27. DONE!!!



28.



29.

30. Done

