

# SA-3DSP USB Firmware Update

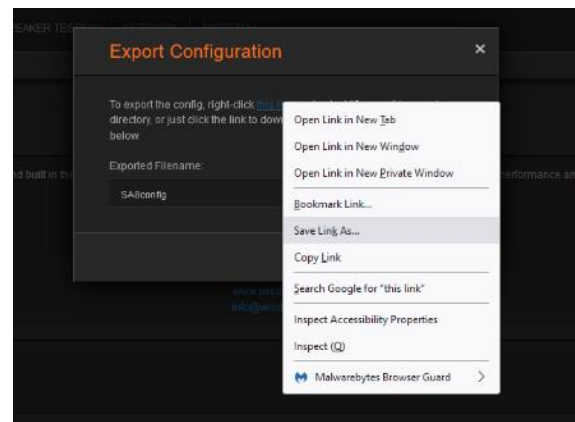
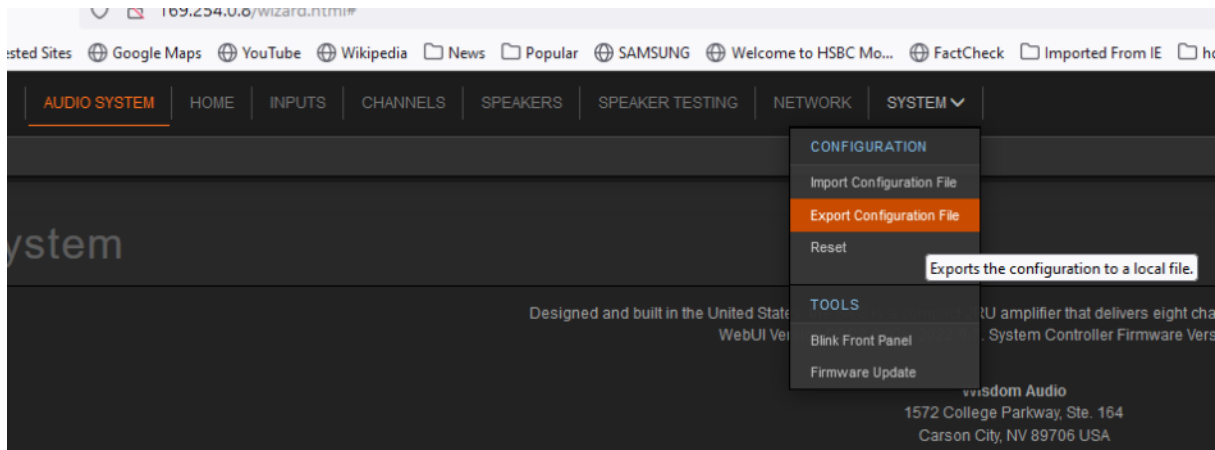
## Firmware Update with USB Drive

Required tools:

- USB drive – Standard Windows formatted thumb drive (FAT32)
  - Highly recommended to have a USB with an activity LED built in
- Firmware Files provided by Wisdom Audio
  - Provided in a .zip file
  - Files are hardware specific and will be identified in the .zip name only
- SA-3DSP or SA-2DSP
- Small insert tool such as a paperclip

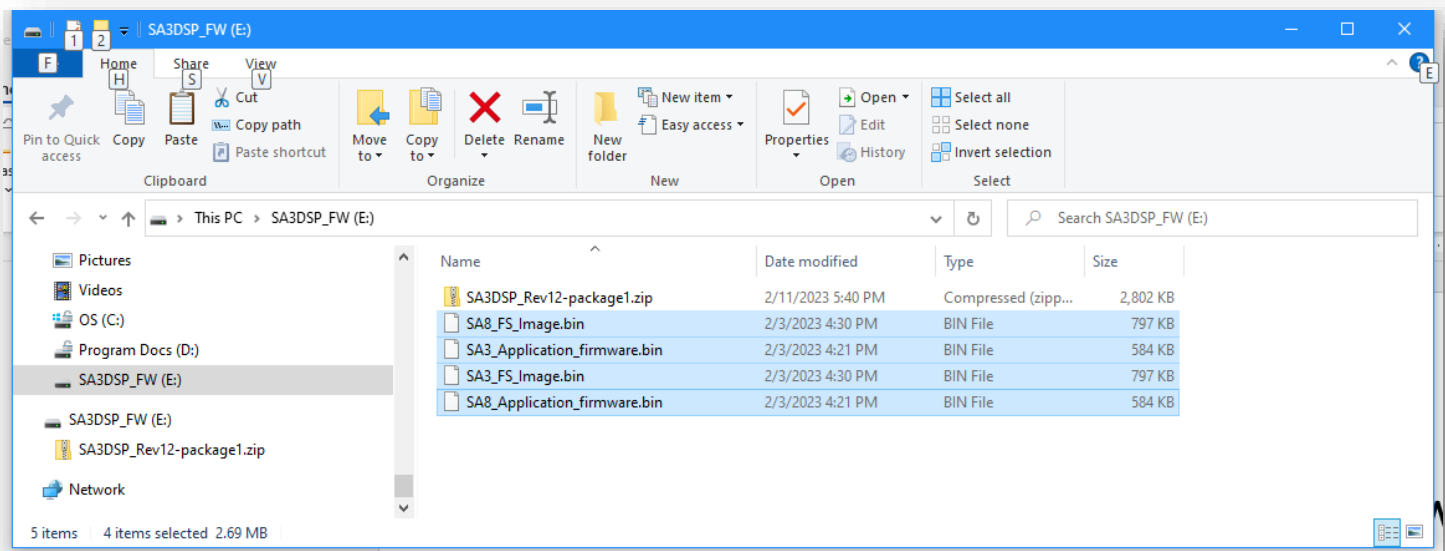
### Backup System Settings and Prepare the SA-x

1. Using the Web UI Interface go to System→Export Configuration (See Wisdom Audio SA-xDSP Blow-in Sheet\_ProductLaunch.pdf for details)
2. Right click on the link and “save as”
3. Save the configuration file as a backup on your computer
4. Close the Web UI page and place amplifier in STANDBY (Amber LED on front panel is ON, Blue LED Off)



## Prepare the USB drive

1. Unzip the files onto the USB drive
  - a. The files may be sent inside a .zip. Unzip the files and place them at the root level, not inside a folder, as shown below
  - b. The 4 files are
    - i. SA8\_FS\_Image.bin
    - ii. SA3\_FS\_Image.bin
    - iii. SA8\_Application\_firmware.bin
    - iv. SA3\_Application\_firmwarew.bin
  - c. Place the **.BIN files** on the USB drive at the root folder.
  - d. **Note: the name must match exactly. Do not change them or the files will not load.**
  - e. **Both “SA8” and “SA3” files are included, but do not try and load these files into an SA8.** Download SA8 or SA8DSP files from [www.wisdomaudio.com](http://www.wisdomaudio.com) .



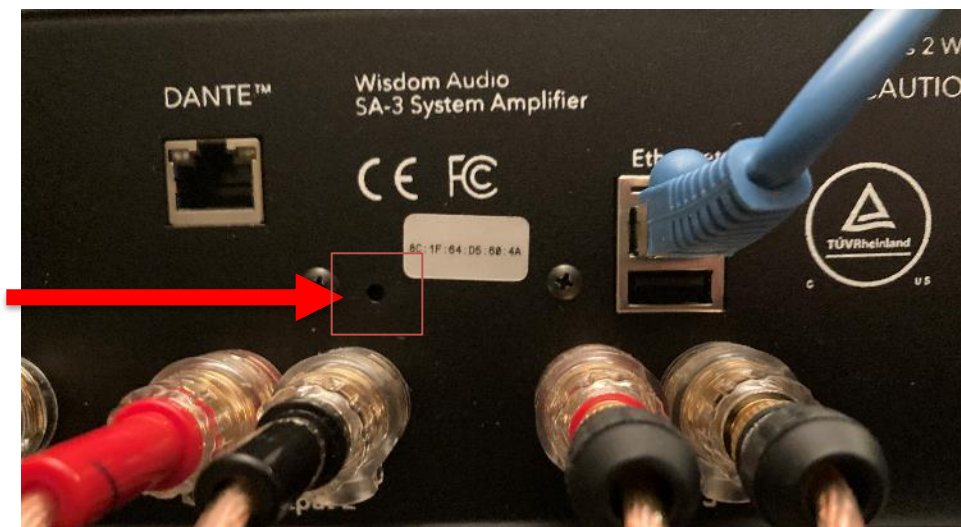
## Load the files

2. SA3DSP or SA2DSP should be in standby
  - a. The SA3 and SA2 have Amber Standby LED and should be lit with Blue LED off

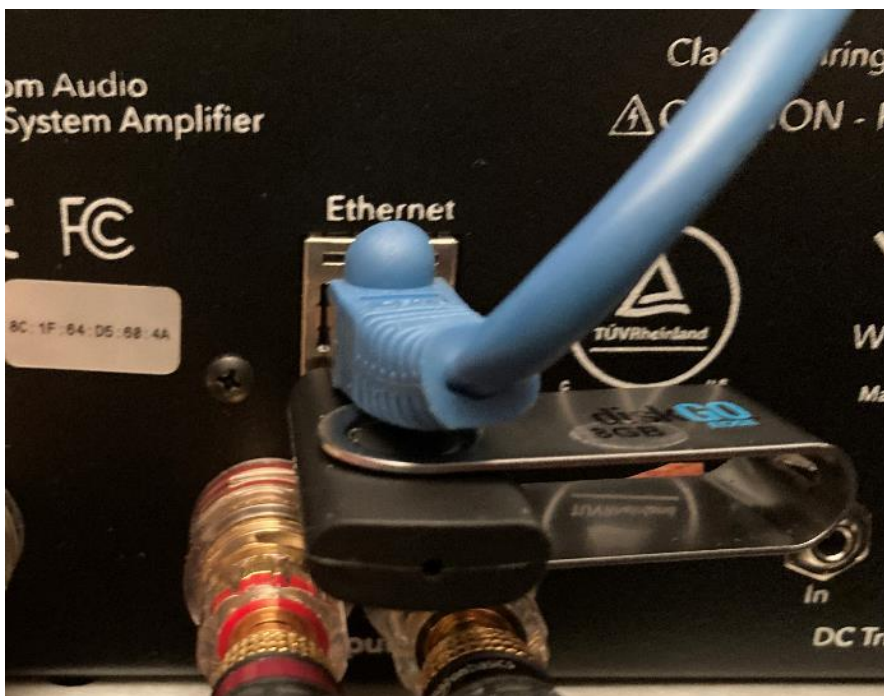


- b.
  - c. It can be helpful to have Ethernet also connected to see status of the system

3. Locate the "Programmer Button" on the rear panel.



- d.
4. Insert the USB drive with the firmware files



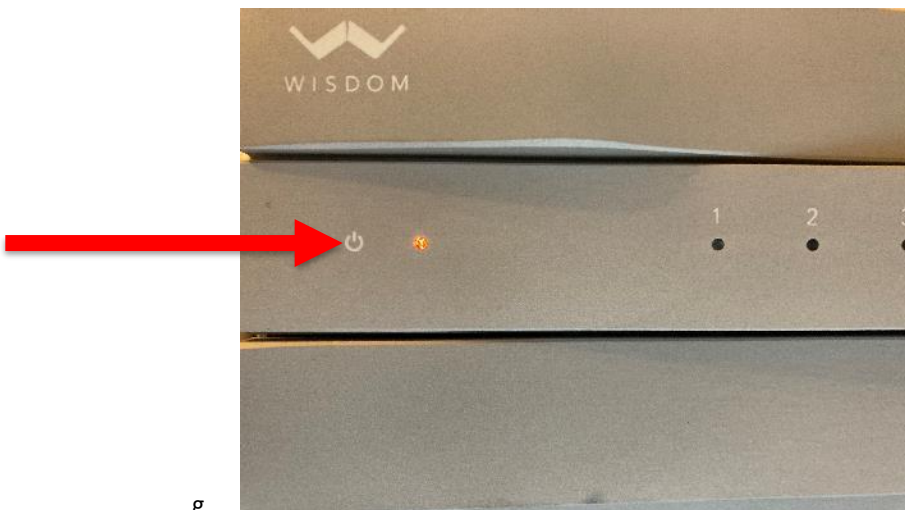
- e.

5. While in standby, using a paper clip or small tool, press the hidden “Programmer Button” on the rear panel



f.

6. While pressing the hidden button, Power on the SA-3DSP or SA-2DSP with the FRONT PANEL switch



g.

7. Continue pressing the “Programmer Button” for approximately 10 seconds while the USB drive is mounted and begins the transfer

- h. The USB drive will mount and the LED will be solid



i.



- i. The USB will begin to load and the LED will BLINK
- j. Release the programmer button
- k. Programming will take approximately 60 seconds and the DSP will reboot automatically
- l. Once complete the LED will stop blinking and the Ethernet will connect and be active
- m. Power Cycle the SA-x Amplifier (in and out of Standby)



i.

---

### Refresh the Web UI Interface

After the new files have been loaded into the SA-xDSP, it may be necessary to refresh the Web UI to make the new UI elements visible. Once you have opened your web browser and are on the setup pages for the SA-xDSP, hold down the SHIFT key and press the RELOAD:

